

Camp Mishemokwa

CAMPING FOR BOYS AND GIRLS
IN THE BLUE RIDGE MOUNTAINS
BAT CAVE, NORTH CAROLINA

CAMP MISHEMOKWA ADMINISTRATION

We believe that a summer camping experience is an investment in your child's future. The skills, attitudes, friendships, and memories developed in summer camp are very difficult to replicate elsewhere. Some of our own most pleasant childhood memories relate to the times we spent in camping. We are dedicated to providing your son or daughter with a challenging, enjoyable, and memorable camping experience, filled with fun and adventure. Our limited enrollment will make it possible for the directors and staff to give careful attention to the individual needs of each camper. Summer in the Blue Ridge Mountains is a wonderful time for learning and fun. We hope that we will have the opportunity to work with your child at Camp Mishemokwa.



Dr. and Mrs. Smith

Camp Mishemokwa was established in 1924. Dr. and Mrs. Seaton E. Smith, Jr. purchased Camp Mishemokwa in the fall of 1976 and began operating it in the summer of 1977 as a coeducational camp for children. Seaton and Lucille have personally directed Camp Mishemokwa since 1977. The camp was accredited by the American Camping Association in 1979 and it has continued to meet the ACA Standards for site, administration, personnel, program, health and food services, and specific activities such as waterfront, horseback riding, target sports, ropes course, backpacking, etc. Every three years the American Camping Association Standards Visitors come to Mishemokwa to certify that the camp is meeting the standards for accreditation. Dr. and Mrs. Smith are active members of the American Camping Association and both are trained ACA Standards Visitors.

Dr. Smith holds a BA from Randolph Macon College, an M.Ed. from the University of Virginia, and a Ph.D. from Ohio University. He served as a Professor of Mathematics Education at the University of West Florida for over twenty years and he was awarded Professor Emeritus status. Dr. Smith is currently a Professor of Mathematics Education at West Georgia College. Dr. Smith has written a number of mathematics textbooks published by Prentice Hall, Random House, and the National Council of Teachers of Mathematics. Dr. Smith also taught mathematics and coached basketball, baseball, and football at the junior and senior high school levels. He has been involved in summer camping for more than twenty-five years. He has served as Vice-President of the Southeastern Section of the ACA and as the Southern Region Representative to the National Board for the Association of Independent Camps.

Mrs. Smith earned a BS and an M.Ed. from Ohio University in Athens, Ohio. She also attended Madison College in Harrisonburg, Virginia, and Morris-Harvey College in Charleston, West Virginia. Mrs. Smith worked as an elementary school teacher for about sixteen years and has had teaching experience at all grade levels from one through five. Her special interests are in teaching reading, mathematics, and art. She has also had a number of years of work in church related youth work and in summer camps. Mrs. Smith currently supervises student teachers on a part-time instructor basis for West Georgia College. Lucille and Seaton have two sons who have both been active in Camp Mishemokwa's development.

Under the direction of Dr. and Mrs. Smith, Camp Mishemokwa has become known worldwide. Campers and staff come from many states and foreign countries each summer.



**ACCREDITED
CAMP** ®

American Camping Association

**Camp Mishemokwa's Program
is Personally Supervised
by**

**Dr. and Mrs. Seaton E. Smith, Jr.
Owners and Directors**

Summer Address (May 15-August 31)
P. O. Box 40
Bat Cave, North Carolina 28710
Phone (704) 625-9051
Fax (704) 625-8041

Winter Address (September 1-May 14)
35 Brentwood Place
Carrollton, Georgia 30117
Phone (770) 830-9788
Fax (770) 830-9712

Fun at Camp



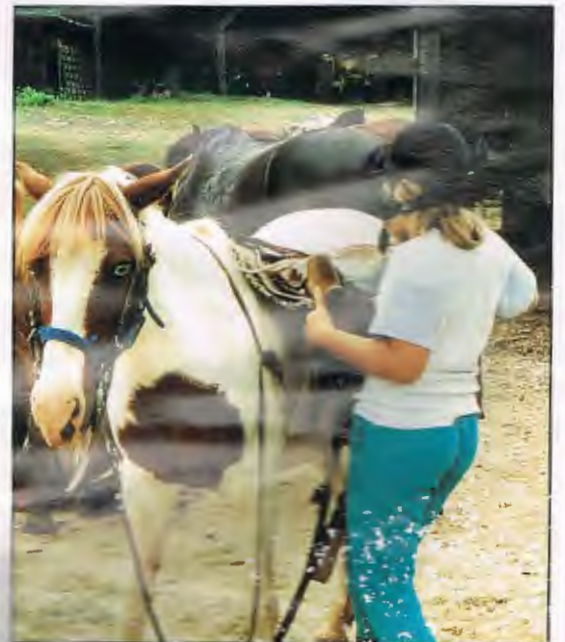
INSTRUCTIONAL PROGRAM

Camp Mishemokwa offers a diversified recreational and educational program for boys and girls. The camp environment provides excellent opportunities to learn new skills and improve on previously learned skills. Campers are grouped in relation to age and/or ability levels for instruction. Program areas are under the direction of skilled and competent instructors. The program of instruction includes: horseback riding, basketball, volleyball, softball, tennis, soccer, climbing and rappelling, wilderness program and pioneering, BB riflery, 22 riflery, archery, martial arts, guitar and music, ceramics and pottery, arts and crafts, drama, swimming, canoeing, ropes course/adventure-challenge activities, tutoring in English as a second language, tutoring in mathematics, tutoring in reading, computer literacy, and nature study.



Horseback Riding

At Camp Mishemokwa, horseback riding is one of the most popular activities. Each camper will have the opportunity to ride five days a week, weather permitting. Instruction begins in the ring, progresses to open field riding, and then to trail riding. Camp Mishemokwa is a member of the Camp Horsemanship Association. There is an additional charge for each session for the riding program at Camp Mishemokwa.





Basketball in Camp Gym



Softball

Sports

The sports activities at Camp Mishemokwa are numerous and varied. The large camp gym provides a regulation basketball court which is often adapted for many other activities such as pillow polo, scatterball, dodgeball, gloveball, tumbling, and indoor track meets. Track and field events, volleyball, softball, earthball, and new games take place on the athletic field.

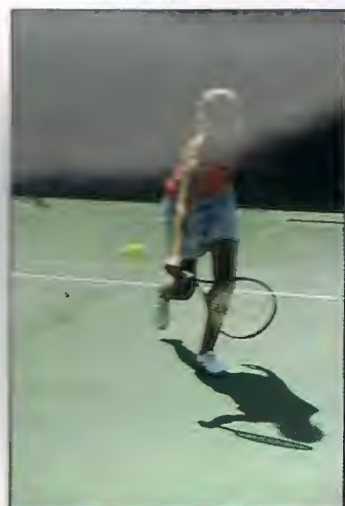


Volleyball



Tennis

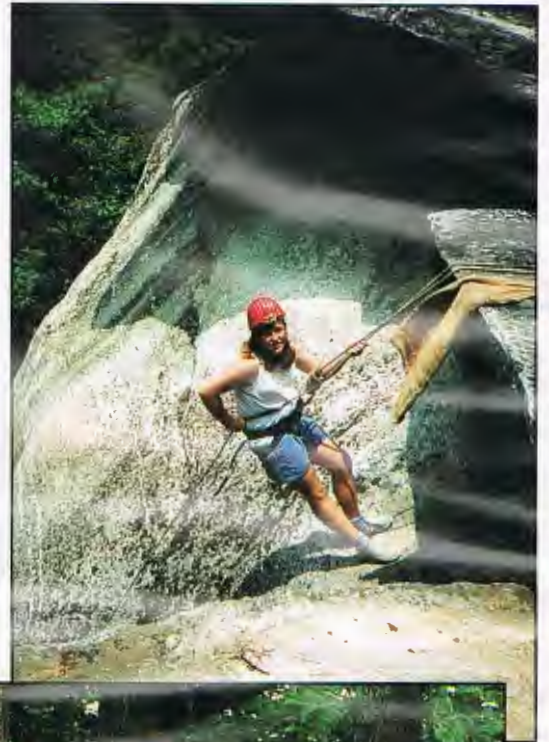
Camp Mishemokwa has several excellent tennis instructors. Tennis tournaments are held several times during the summer. Campers who plan to participate in the tennis program should bring a tennis racket and at least two cans of tennis balls. Camp Mishemokwa is a member of the United States Tennis Association.



Soccer

Basic skills and fundamentals are emphasized in our soccer classes. These classes are usually taught by British instructors.

CLIMBING AND RAPPELLING



Our climbing and rappelling classes are open to all campers 11 years of age or older.

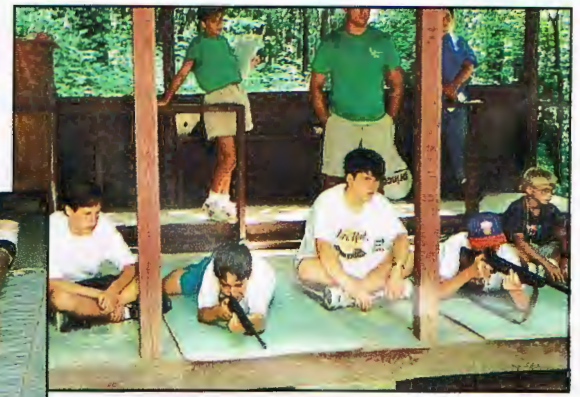
WILDERNESS PROGRAM AND PIONEERING



The Wilderness Experience Program begins with several days of instruction in Camp and a few hikes of various lengths. Instruction will focus on outdoor cooking, pioneering, orienteering, backpacking, rappelling, wilderness camping, safety, and leadership.

After a few days of training, the crew will be off for a two to three day backpacking trip, where they will pack and carry their own gear, set up their own shelter (tents or other), and cook their own meals. Hiking, plant identification, and many other activities will fill the days on the trail.

The group will return to camp for a day or two and then be off for another challenge. The activities integrated into the two-week program include a day of rappelling in the nearby mountains, a canoeing trip, two or three backpacking trips, and possibly a whitewater rafting trip (optional for additional cost).



Riflery

Depending upon age and size, campers may take lessons in shooting B-B guns and 22 rifles. Several sessions in gun safety and handling are conducted prior to the time the camper begins actual shooting. Camp Mishemokwa is a member of the National Rifle Association.



Archery

Careful attention is given to safety and proper techniques of shooting. Archery tournaments are held several times each summer. Camp Mishemokwa is a member of the National Archery Association.



Martial Arts

Martial Arts is a popular class for all ages.



Guitar and Music

Beginning and intermediate level instruction in guitar is offered. Guitars are provided by the camp for use in class.



Ceramics and Pottery

Instruction in ceramics and pottery making is also offered. Many children enjoy working with clay and are quite pleased when they use their hands to transform a piece of clay into a work of art. Campers may also develop their skills on either the kick wheel or the electric potter's wheel.



Arts and Crafts

Many useful and beautiful crafts are created in Camp Mishemokwa's arts and crafts shop. Campers design their own original creations through the use of many of nature's materials.

Drama

Our drama classes provide campers opportunities to participate in skits and short plays. Several of these are presented to the entire camp.



Swimming

Swimming at Camp Mishemokwa is conducted in accordance with the standards of the American Red Cross. Swimming instruction is given to those campers who selected the instructional swim activity. The levels of instruction range from Beginner through Life Saving. Swimming classes are limited in number so that each camper receives individual instruction and attention. The waterfront area is always supervised by qualified lifeguards. A special area is identified for non-swimmers.

Canoeing on Lake Lure



Canoeing

Canoe classes begin with basic instruction in safety and handling, and progress to time trials on a marked course. A canoe trip away from camp (sometimes overnight) is always a highlight. The canoe class is open to any camper who can pass the swimming test.



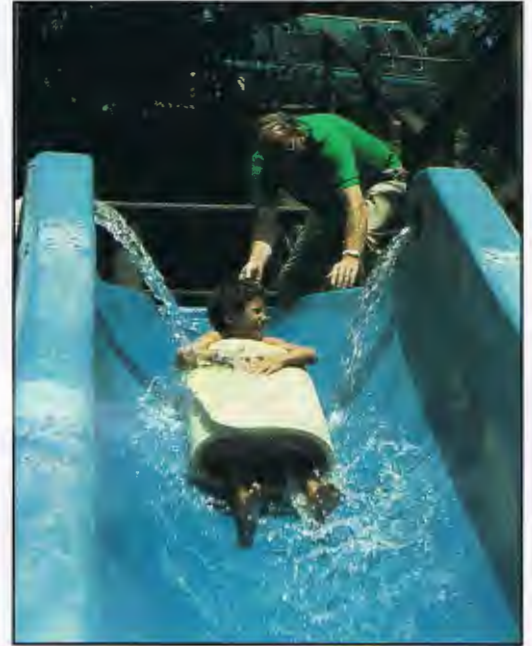
Tubing on Broad River – Bat Cave



AQUATICS ACTIVITIES AT CAMP MISHEMOKWA



Watersliding at Camp



Riding the "Funbug"



"Blobbing" on "The Blob"

CHALLENGE ACTIVITIES

At Camp Mishemokwa the adventure-challenge activities are open to all campers 11 years of age and older. Our ropes course has a number of high and low initiatives to challenge our older campers. These activities are supervised by trained and skilled staff members.



Climbing and Rappelling Tower with Cargo Net Climb



Zipwire Ride from Climbing/Rappelling Tower



**High Ropes
Three-Wire Bridge**



Trust Fall



Rock Wall for Climbing and Rappelling



Tutoring in English as a Second Language



Tutoring in Mathematics

Academics

Special developmental (remedial and enrichment) programs in reading and mathematics will be provided when requested by parents. The reading and mathematics programs will be under the direction of teachers who have had extensive training and experience in the teaching of reading and mathematics. These programs will be designed to accommodate the individual needs of each participant. No camper will be accepted in the reading and/or mathematics classes unless he or she is enrolled for a minimum of four weeks. There is an additional charge for the instruction in reading, mathematics, and English as a Second Language.



Tutoring in Reading



Computers

Computer literacy instruction is offered.



Nature Study

Outdoor education opportunities abound in a summer camp environment. The staff at Camp Mishemokwa is dedicated to the philosophy that a summer camping experience should be educational as well as recreational.

HAVING FUN AT CA



MP MISHEMOKWA



LIVING AT CAMP

The cabins in which the campers live are well constructed with wide overhanging roofs which protect the screened portions of each cabin in rainy weather. The campers sleep on steel bunk beds and cots with comfortable vinyl covered cotton or foam mattresses.

A counselor lives in each cabin with his or her group of campers. The cabin unit is responsible for keeping its own cabin area clean. Campers are taught to work in harmony with the cabin group in many situations.

The bath houses are conveniently located throughout the camp property. Each bath house is clean and modern, with flush toilets, tile floors, and hot showers.



Interior of Cabin



Flag Raising



Cabins

MEALTIME

The dining hall is comfortable, clean, and rustic. The stone fireplace helps to create a most pleasant atmosphere, especially on cool evenings. The spacious kitchen is furnished with modern restaurant-grade equipment. Our kitchen staff is dedicated to the task of providing nutritious meals for our campers. When a camper celebrates a birthday at camp, he or she receives a birthday cake to share with fellow campers. Our menus are approved by a certified dietician.



Dining Hall



SPECIAL TRIPS

A highlight of each session at camp is provided by the tripping program. Trips are planned in accordance with the interests and maturity of the campers. Costs of admission fees, transportation, and spending money for optional trips away from camp are extra. (See enclosed list of optional trips planned for this season.) There are no extra costs involved in canoeing trips, backpacking trips, tubing trips, and rock climbing/rappelling trips.



Atlanta Braves Game – 2-Day Atlanta Trip



Waterskiing on Lake Lure



Rock Climbing and Rappelling



Whitewater Rafting



Chimney Rock Park



Ghost Town – Maggie Valley



Carowinds – Near Charlotte



Six Flags – Atlanta

HEALTH AND SAFETY

Camp Mishemokwa will meet the stringent requirements of the Henderson County, North Carolina Health Department regarding food preparation, water supply, waste disposal, bathroom facilities, sleeping quarters, swimming areas, and camp surroundings.

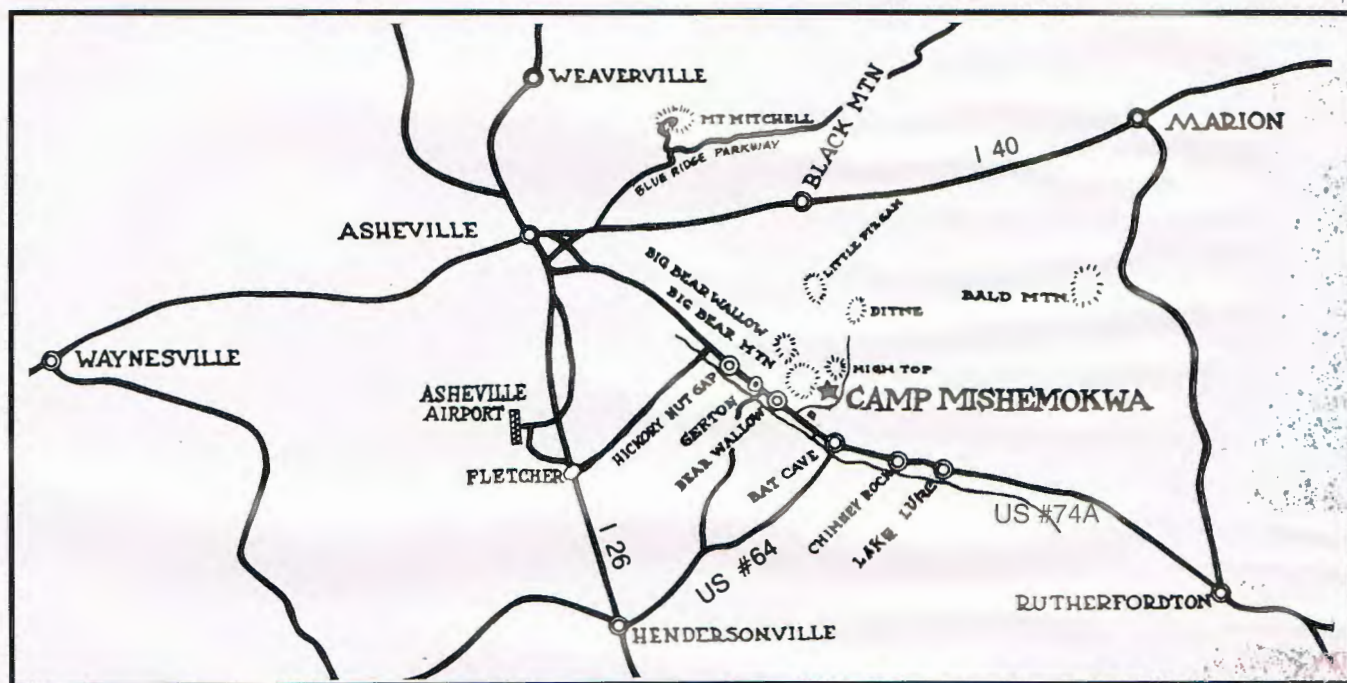
Medical examinations by an M.D. are required of all campers, counselors, staff, and food service employees prior to arrival at camp. The camp maintains an infirmary and has a licensed nurse on its resident staff 24 hours a day. We have doctors "on call" and 2 hospitals within 16 miles.

A TYPICAL DAILY SCHEDULE

| | | | |
|-------|------------------------|------|--------------------------|
| 7:45 | Wake Up | 2:00 | Rest Hour |
| 8:15 | Flag Raising | 3:00 | Camp Canteen |
| 8:30 | Breakfast | 3:20 | Block A Activity Period |
| 9:10 | Cabin Clean Up | 4:25 | Block B Activity Period |
| 9:25 | First Activity Period | 5:30 | Cabin Time |
| 10:20 | Second Activity Period | 6:00 | Dinner |
| 11:15 | Third Activity Period | 6:40 | Flag Lowering/Cabin Time |
| 12:10 | Fourth Activity Period | 7:30 | Evening Program |
| 1:05 | Cabin Time | 9:15 | Return to Cabins |
| 1:15 | Lunch | 9:45 | Lights Out |

LOCATION OF CAMP MISHEMOKWA

Camp Mishemokwa is located just off U.S. Highway 74A (3 miles west of Chimney Rock, North Carolina) with majestic views of valleys and mountain ranges in all directions. From U.S. 74A, drive north on the first road to the west of the old Valley Clinic Building. The Camp is at the end of this county maintained road (known locally as Middle Fork Road) approximately 2 1/2 miles from U.S. 74A. Mishemokwa's wooded mountain top provides a beautiful 160-acre camp setting.



Important Notes

The pictures and activities presented in this brochure are representative of those which take place at Camp Mishemokwa. However, we reserve the right to make changes in our activities and schedules as we strive to provide variety and improvements in our programs. Please see the inserted materials which are included with this brochure for additional information, application forms, and current prices.



It is impossible to put into words and photographs all of the wonderful experiences and memories accumulated in the weeks at summer camp. The campfires, the skits, the games, the singing, the trips, the living together in a beautiful natural setting, the cabin spirit, the competition, the working together, the caring for one another, the learning, the development of new skills, the new friendships are all part of the heartwarming experience that campers and staff alike will have at Camp Mishemokwa during the summer.



Whitewater Rafting on French Broad River



Boating and Aquasled Riding on Lake Lure